

Help Topics – Selecting a Topic

| | |
|---|---|
| Catalog Home Page – Selecting a Line | 1 |
| Functional Elements in the Menu Bar | 2 |
| Left-Hand Edge of the Screen: Elements for Navigating and Searching | 3 |
| Display and Zoom Functions of the Drawings | 4 |
| Shopping Basket – Adding Components and Defining the Transaction | 5 |
| Place the Order or Inquire Price | 6 |
| Questions / Suggestions | 7 |

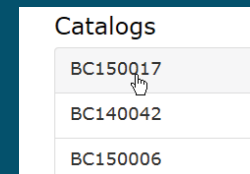


Catalog Home Page – Selecting a Line

The lines delivered to your company are listed. Click on a number to go to the catalog for the desired plant.

Click on the horizontal arrows to switch between the lines.

Click on an item number on the drawing or in the list to move to the desired component or to the subassembly.



1

2

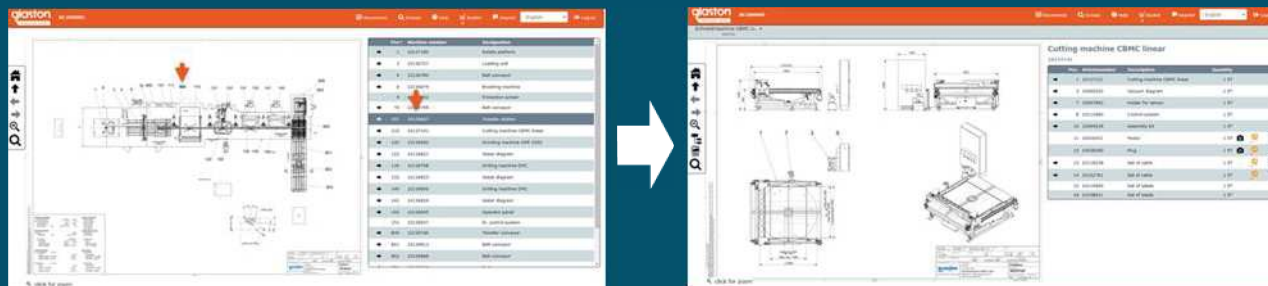
3

4

5

6

7



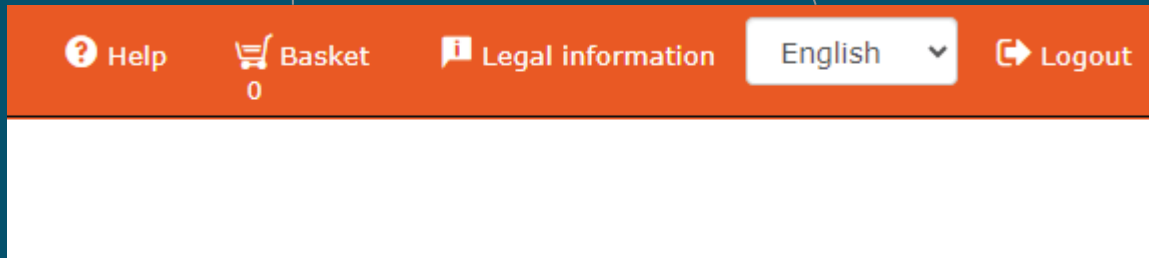


Functional Elements in the Menu Bar

Basket:
List of selected
products for purchase
or price inquiry

Language Selection

Logout



1

2

3

4

5

6

7



Left-Hand Edge of the Screen: Elements for Navigating and Searching



Jumps back to the home screen of the application



Resets a magnified drawing to its original size



Opens the next higher level



Shows or hides the assembly structures



Jumps back to the previous assembly on the same level



Switches between 3 display types for drawing and component list



Jumps to the next assembly on the same level



Search function: Enables searching by part number or by component name

1

2

3

4

5

6

7

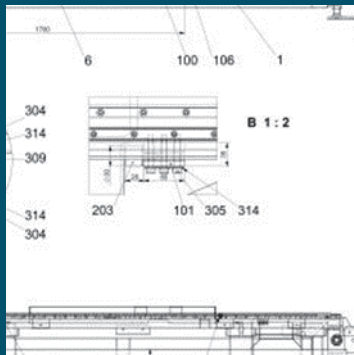


Display and Zoom Functions of the Drawings

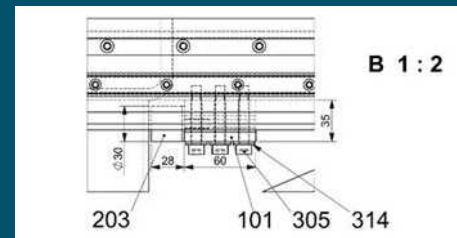
Move the cursor to an item number on the drawing to select the component in the list.

Click on the item number:

- ⇒ You may obtain more information about the component.
- ⇒ If the selected position number refers to an assembly it will take you to the sub-assembly.



Click outside an item number in the drawing to enlarge the display.



1

2

3

4

5

6

7



Shopping Basket – Adding Components and Defining the Transaction (Order or Request)

To add a component to the shopping basket:
Click on the symbol «Add to basket».
⇒ The «Part information» window appears.

Click on «Add to my basket».
⇒ The content of the shopping basket is shown.

Click on «Continue». In the next window, you can define the transaction type – Request or Order.

1

2

3

4

5

6

7

Part Information

Article Number: L-515204
 Designation: Pressure spring
 Specification: für Schnapper 07560.10-2
 Wearing Category: W1
 Used in Catalog: 2 Pieces show usage
 Used in Machine: 2 Pieces show usage
 Quantity: 1 Pieces

Basket

Your current basket:

| Part Number | Designation | Quantity |
|-------------|-----------------|-----------|
| L-515204 | Pressure spring | 1 Pieces |
| L-306731 | Roller | 10 Pieces |

Basket

Order Number: 1004-001113
 Date: 20.01.2016 11:57:16
 Part Number: L-515204
 Designation: Pressure spring
 Quantity: 1



Place the Order or Inquire Price

Scroll down to display the «Submit transaction» button.
 Click on «Submit transaction».
 ⇒ The message «Order XXX has been saved» appears.

Click on «Show Order» to display an overview of the order.
 ⇒ You can print the order or send it to any e-mail address.

The screenshot shows the 'Warenkorb' (Shopping Cart) interface. On the left, a table lists items with their positions, part numbers, descriptions, and quantities. A button 'Bestellung anzeigen' is highlighted with a mouse cursor. A message box above the button states 'Bestellung 0000058 gespeichert'. An arrow points from this window to the right window, which displays the order confirmation page. This page includes the Glaston logo, contact information for Bystronic Lenhardt GmbH, and a table of the ordered items.

| Teil-Nr. | Bezeichnung | Menge | Einheit | Abbildung | Referenz |
|----------|-------------|-------|---------|-----------|------------|
| 10075496 | Mischwelle | 1 | Stück | | L-233.0996 |
| L-515204 | Druckfeder | 1 | Stück | | L-233.0996 |

Gewünschter Liefertermin: Innerhalb 1 Woche
 Akzeptierte Lieferform: Komplettlieferung oder Teillieferung
 Bystronic Lenhardt GmbH
 75242 Neuhausen-Hamberg
 Deutschland

1

2

3

4

5

6

7



Questions / Suggestions

The catalog has been compiled with great care and we have tried to make its usability intuitive and as easy as possible. Should you still experience any problems, please contact your nearest service partner or:

parts.fi@glaston.net (Glaston Glaston Finland Oy).

We strive to improve our catalog steadily.

We welcome your feedback and suggestions.

Your Glaston Finland Spare Part Team.

1

2

3

4

5

6

7